

HPV Sampling Kits have been mainly used for collection, stabilization and transportation of the endocervical exfoliated cells before HPV testing. Normally, a HPV Sampling Kit contains 1 Cervical Sampling Swab, 1 collection tube with HPV Transport Medium, 2 Adhesive Barcodes, 1 Instruction Card and 1 Collection Bag. Customization is welcome.



## **HPV Sampling Kit Contains**

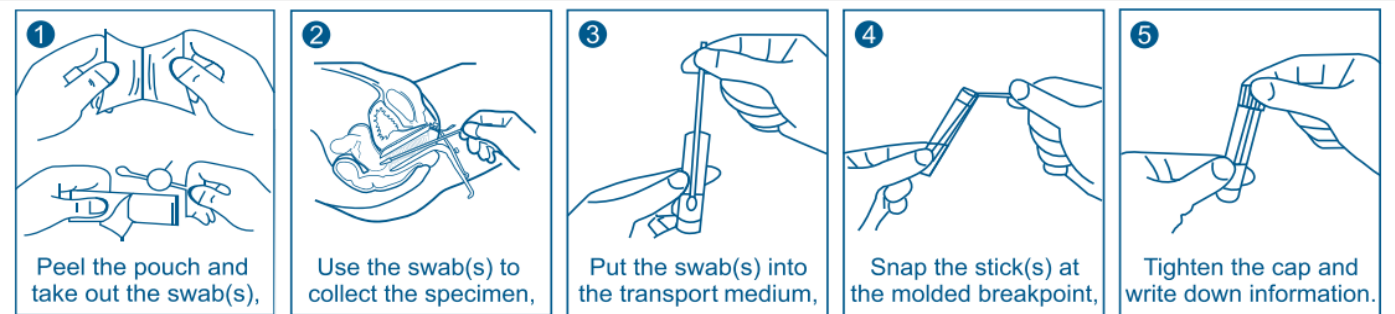
### **Disposable Sampling Swab(s)**

MS-VF4501 is a Flocked Sampling Swab used for cell & virus specimen collection, it has been designed for HPV & TCT specimen collection, and Gynecological clinical diagnostics. The Flocked Swab is ideal for collecting large amount of cells and rapid elution of the specimens that instantly releases the cells into the transport medium. Our sterile Flocked Swabs are made in GMP workshop with superior quality, we have CE MDR-0197, FDA, TGA and MHRA.

## HPV Transport Medium

The HPV Transport Medium is mainly composed of HBSS, Preservatives, Antibiotics, Ethylene Diamine Tetraacetic Acid, Tritonx-100 and Methanol. It is used to preserve and transport the collected cells, and only for in vitro analysis and testing, not for therapeutic use.

### How to Use the HPV Sampling Kit?



### Storage and Disposal

The optimum storage temperature is 2°C to 30 °C. Do not incubate, or freeze prior to use, improper storage will result in a loss of testing. Medical waste must be disposed of in compliance with the local legislation. Please take the appropriate precautions for infected material if necessary.

### Product Pictures

